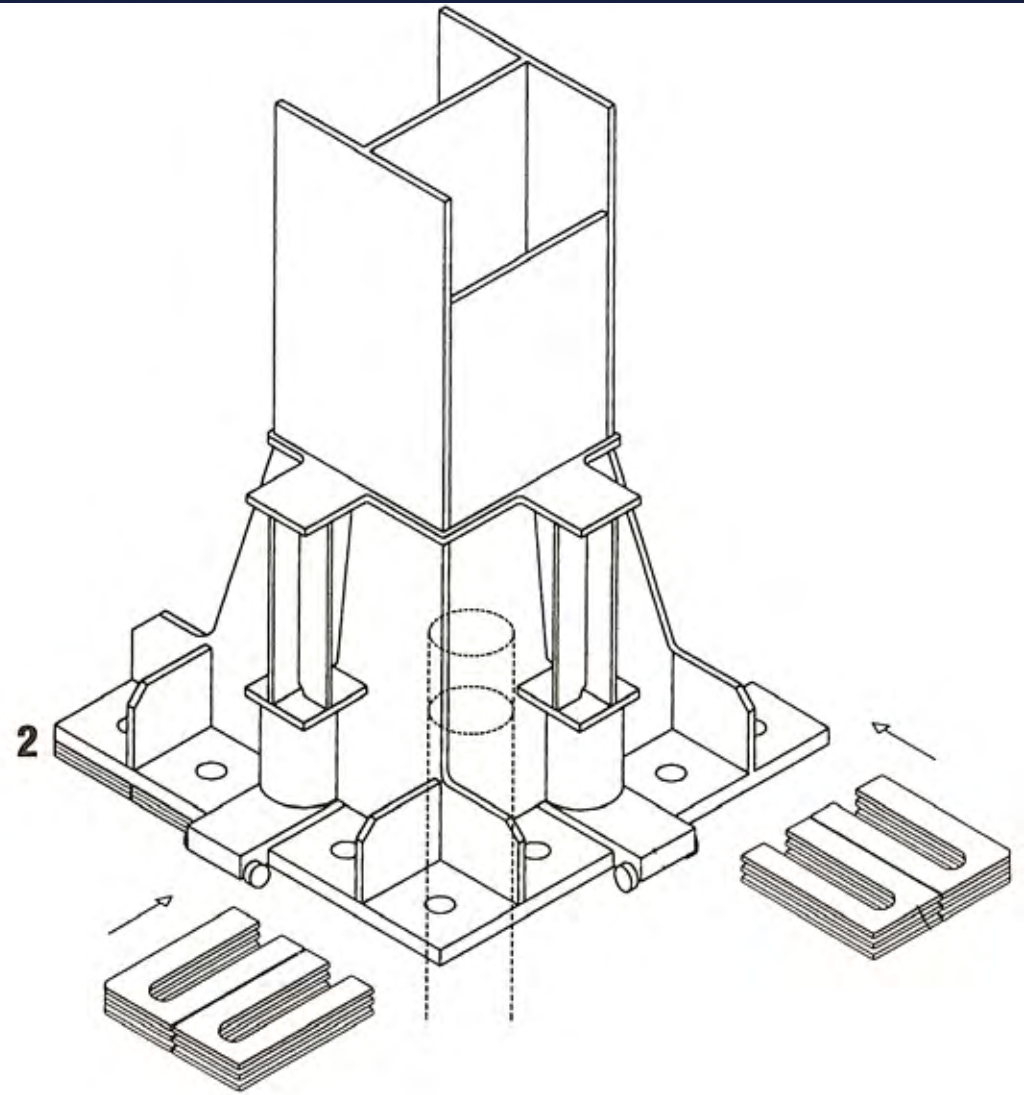


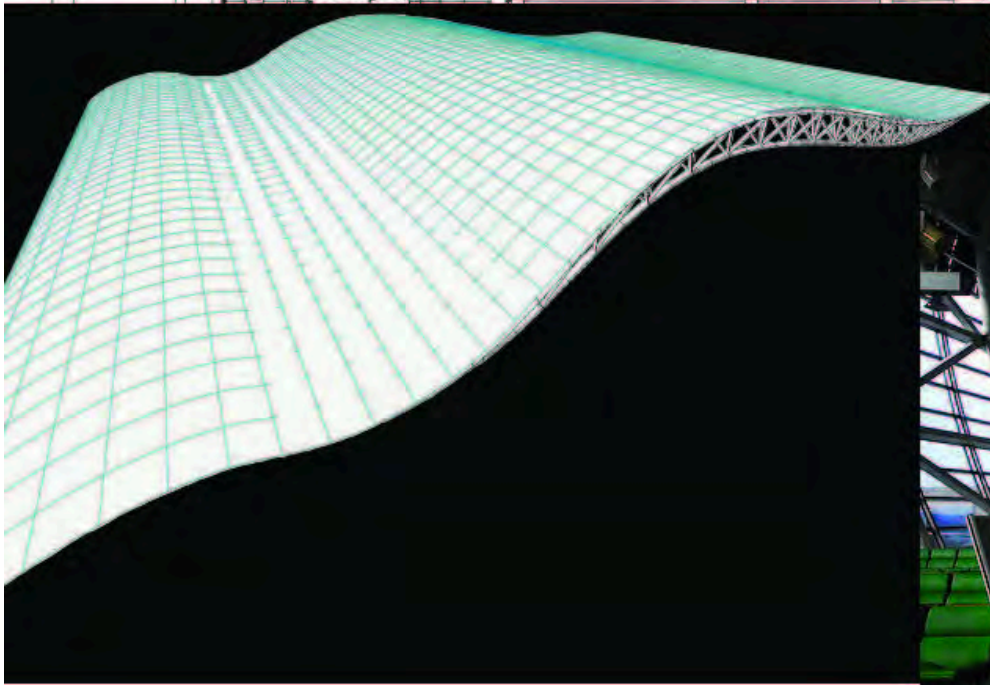
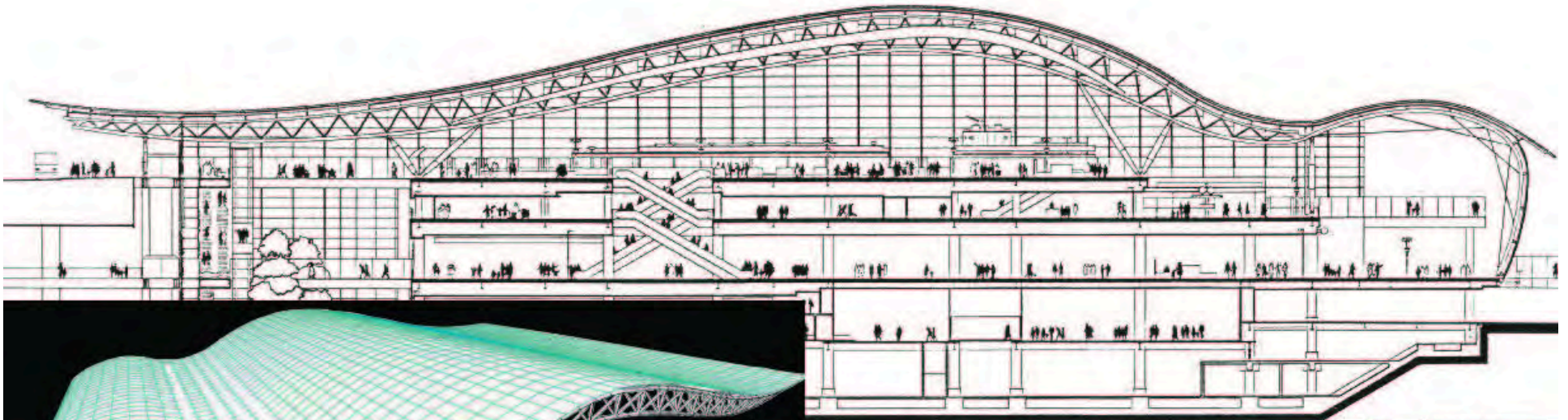
# A new island airport, Kansai

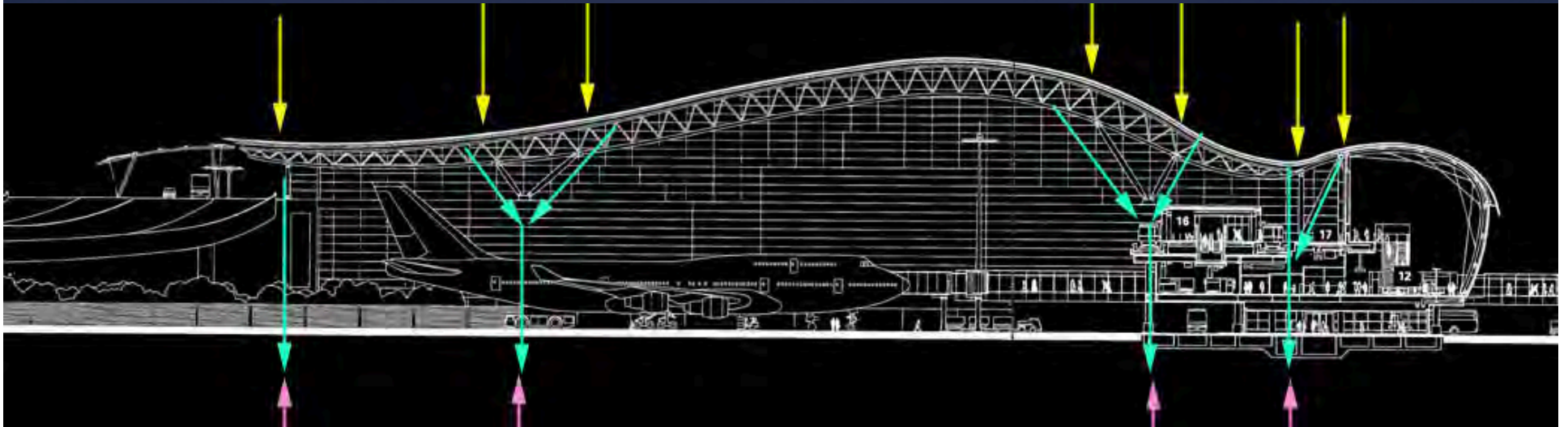
Renzo Piano

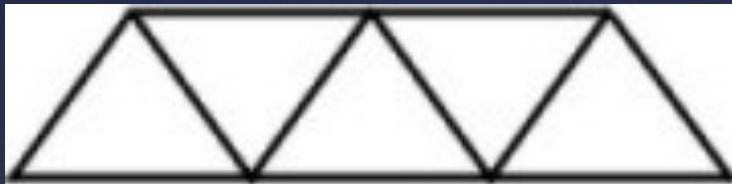












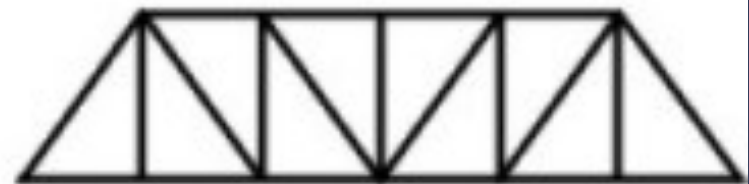
WARREN TRUSS



PRATT TRUSS



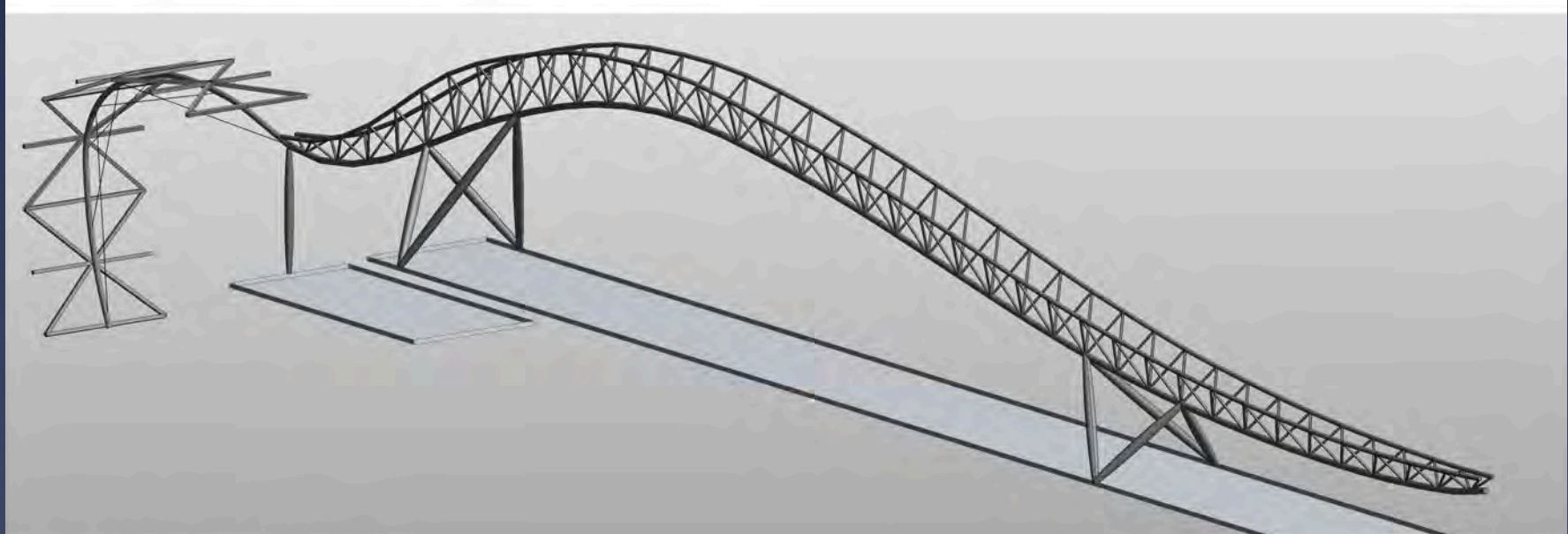
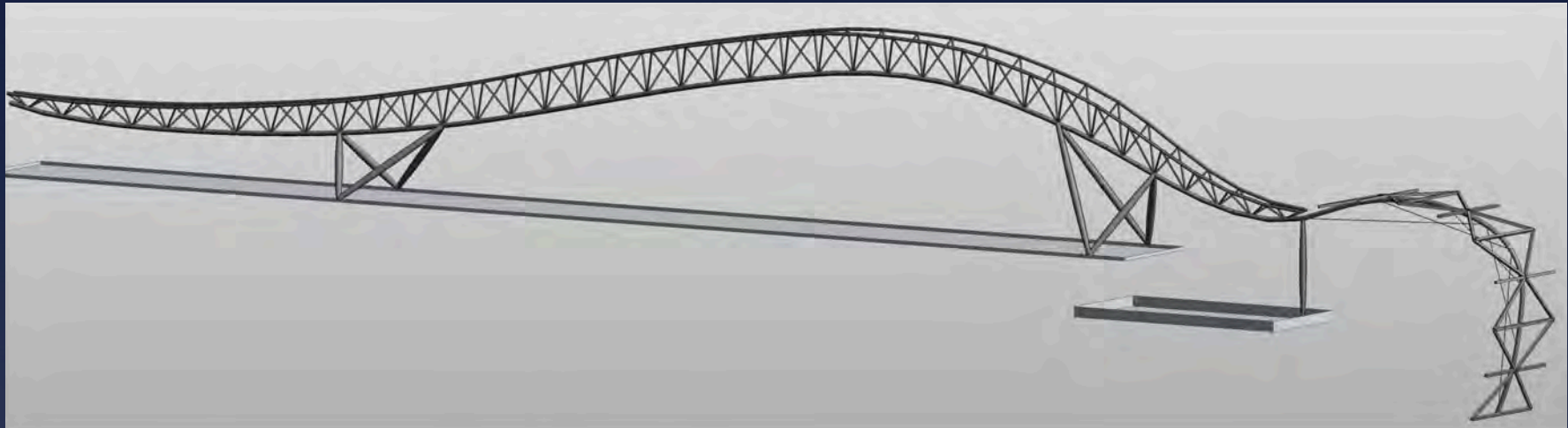
MODIFIED WARREN TRUSS



PRATT TRUSS

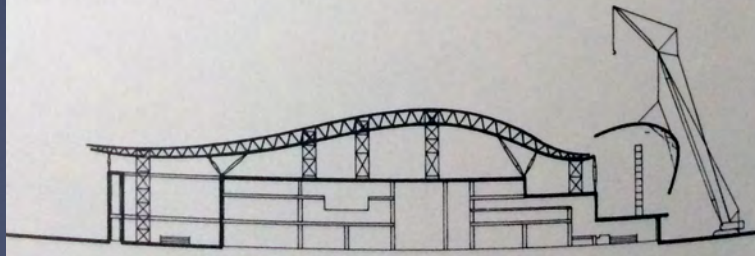
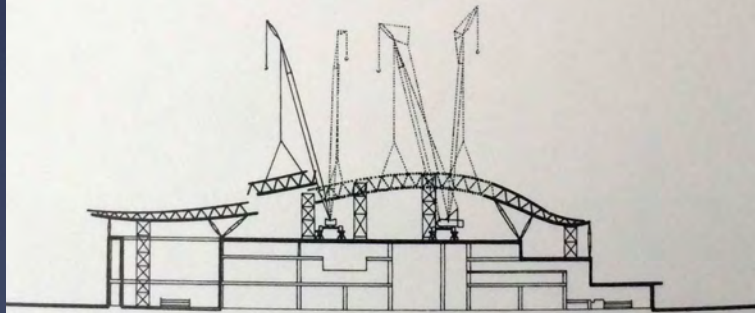
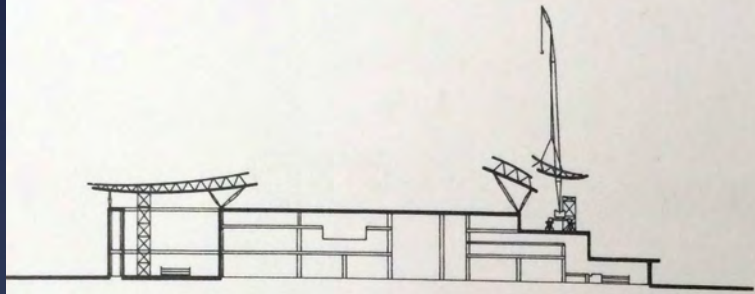
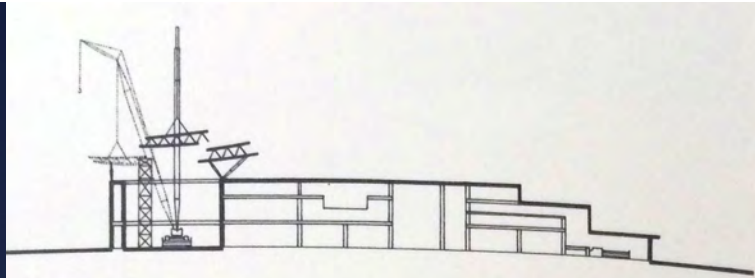






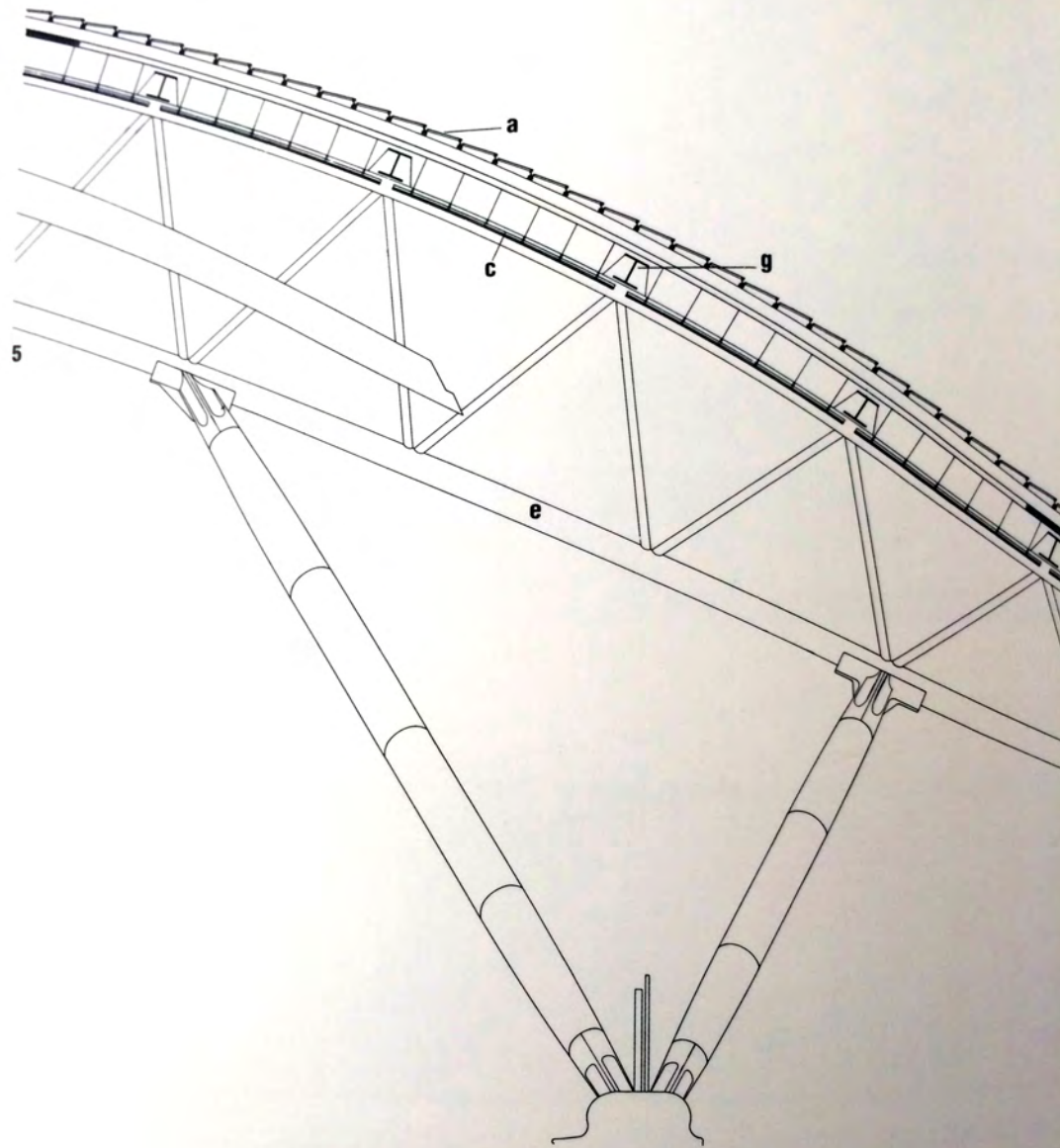




















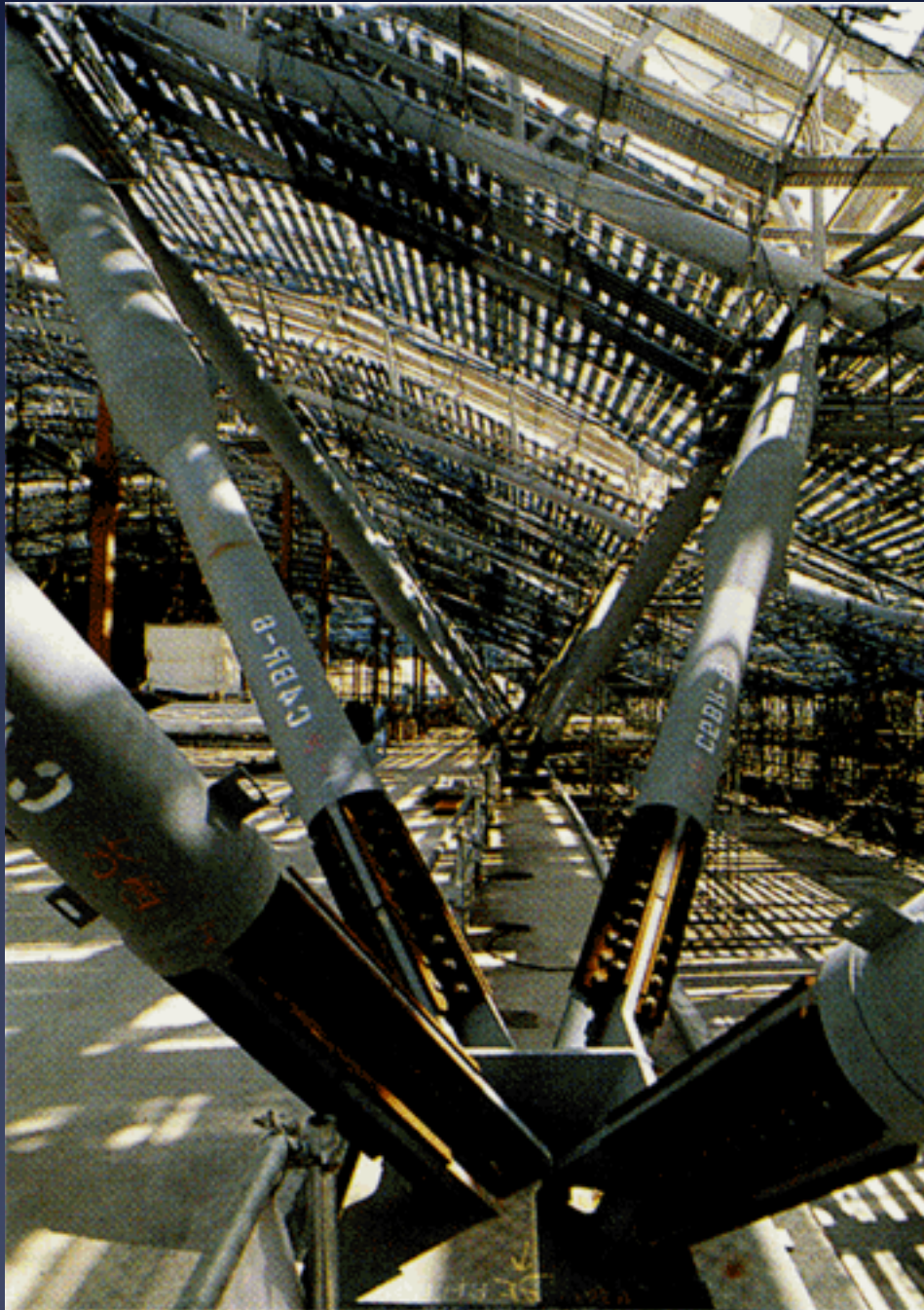


157905132









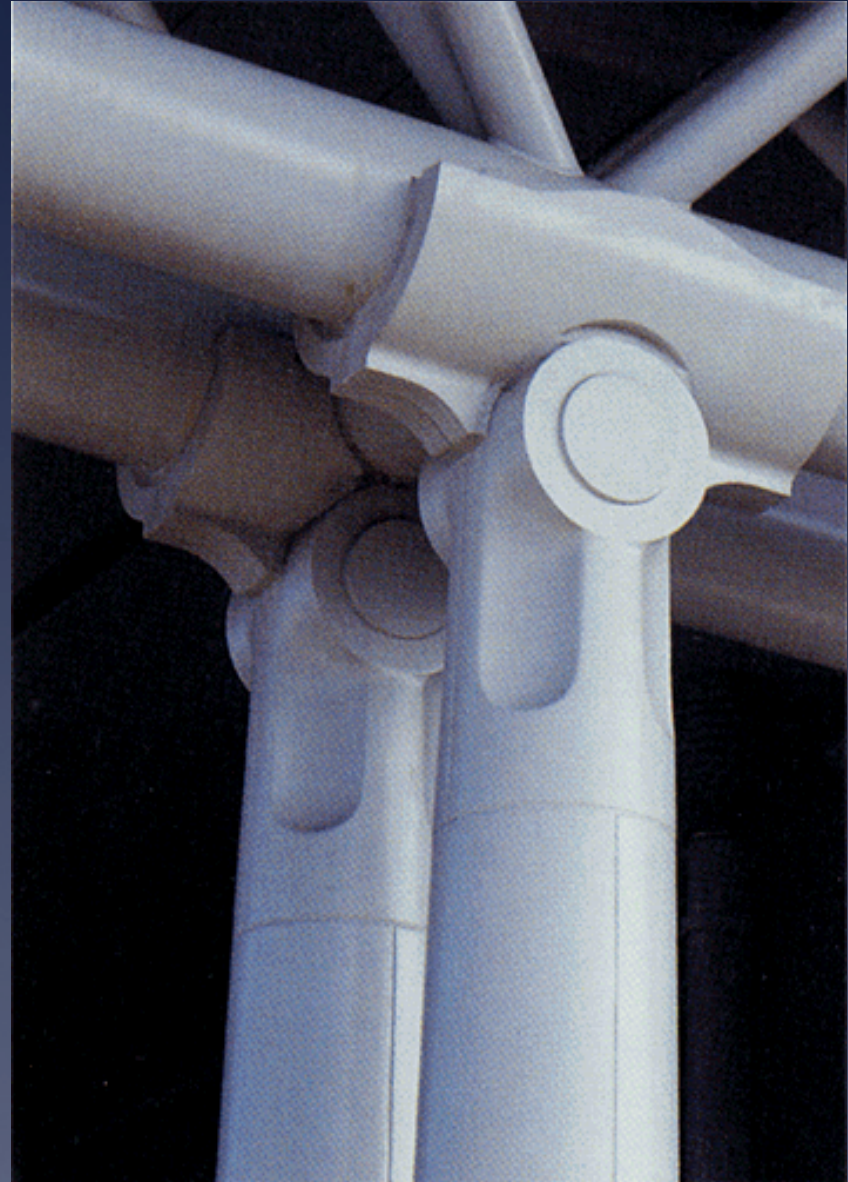
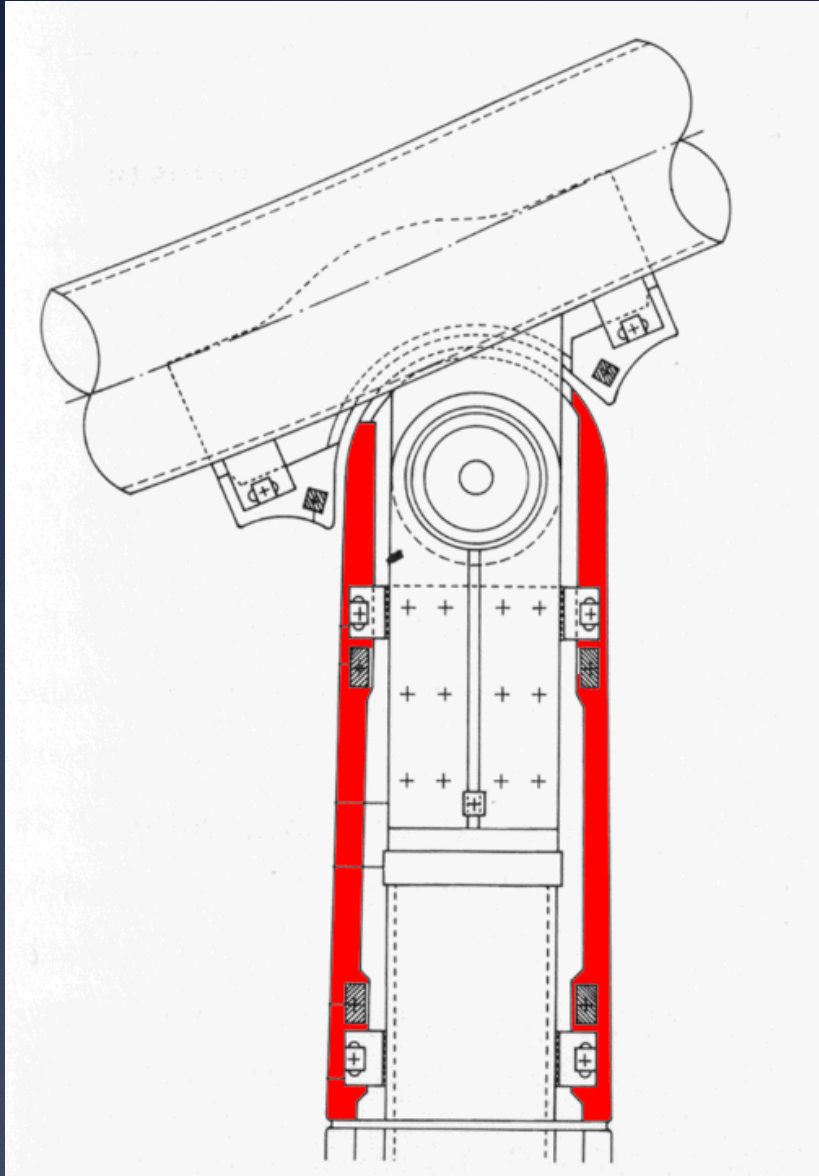
## Protect to 4 meters

The building codes in Japan allowed for steel to be unprotected 4 meters above the highest floor of occupancy.

Our building codes will often allow noncombustible construction types to be exposed 20 feet above the highest level of occupancy

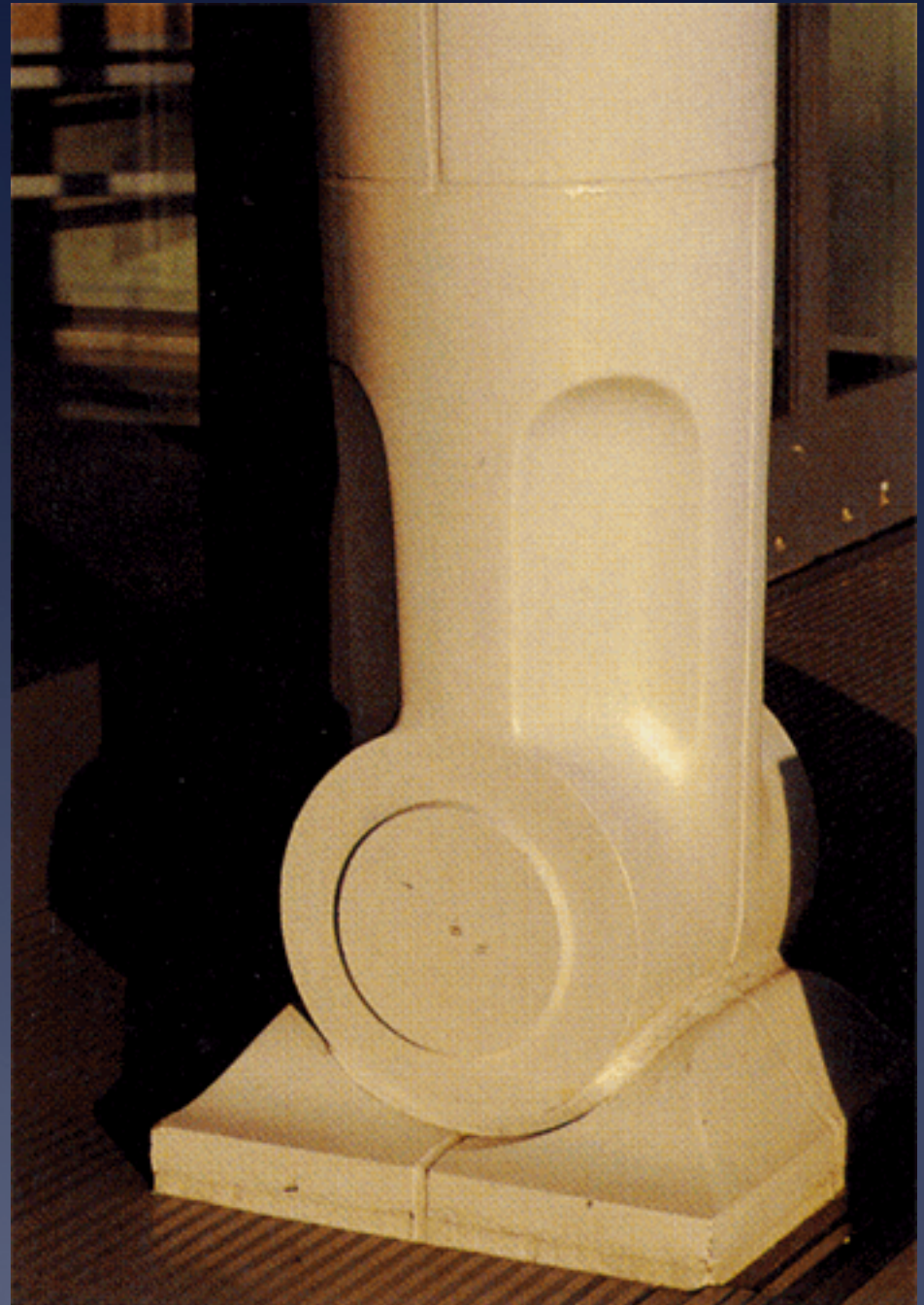
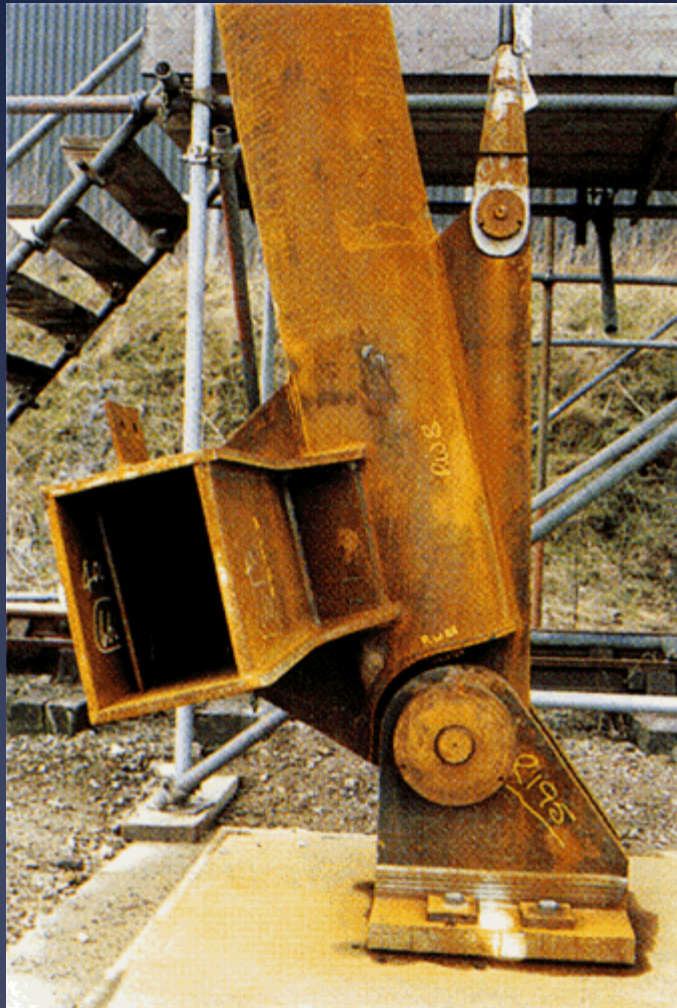


# Cladding to express what is beneath

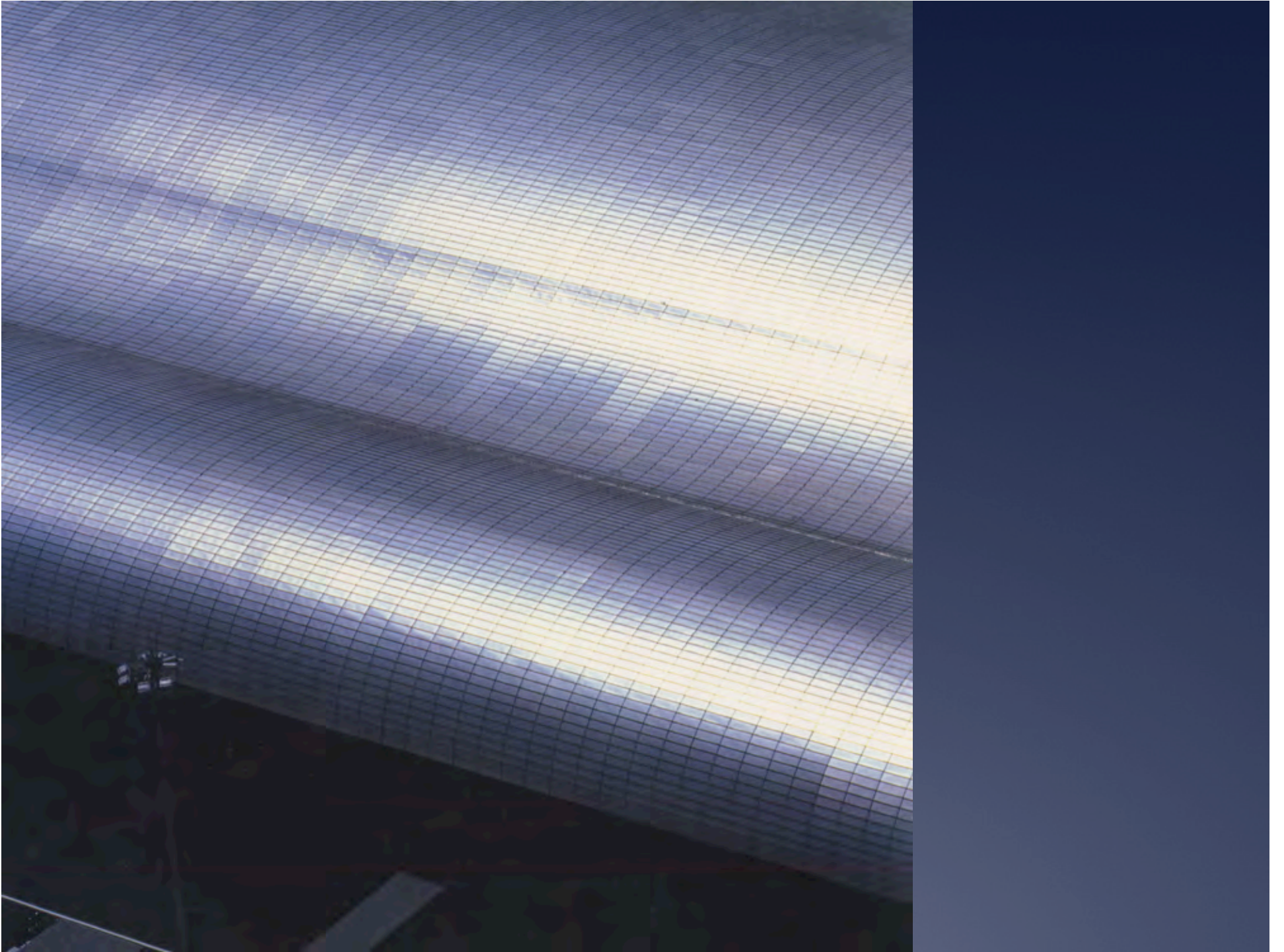




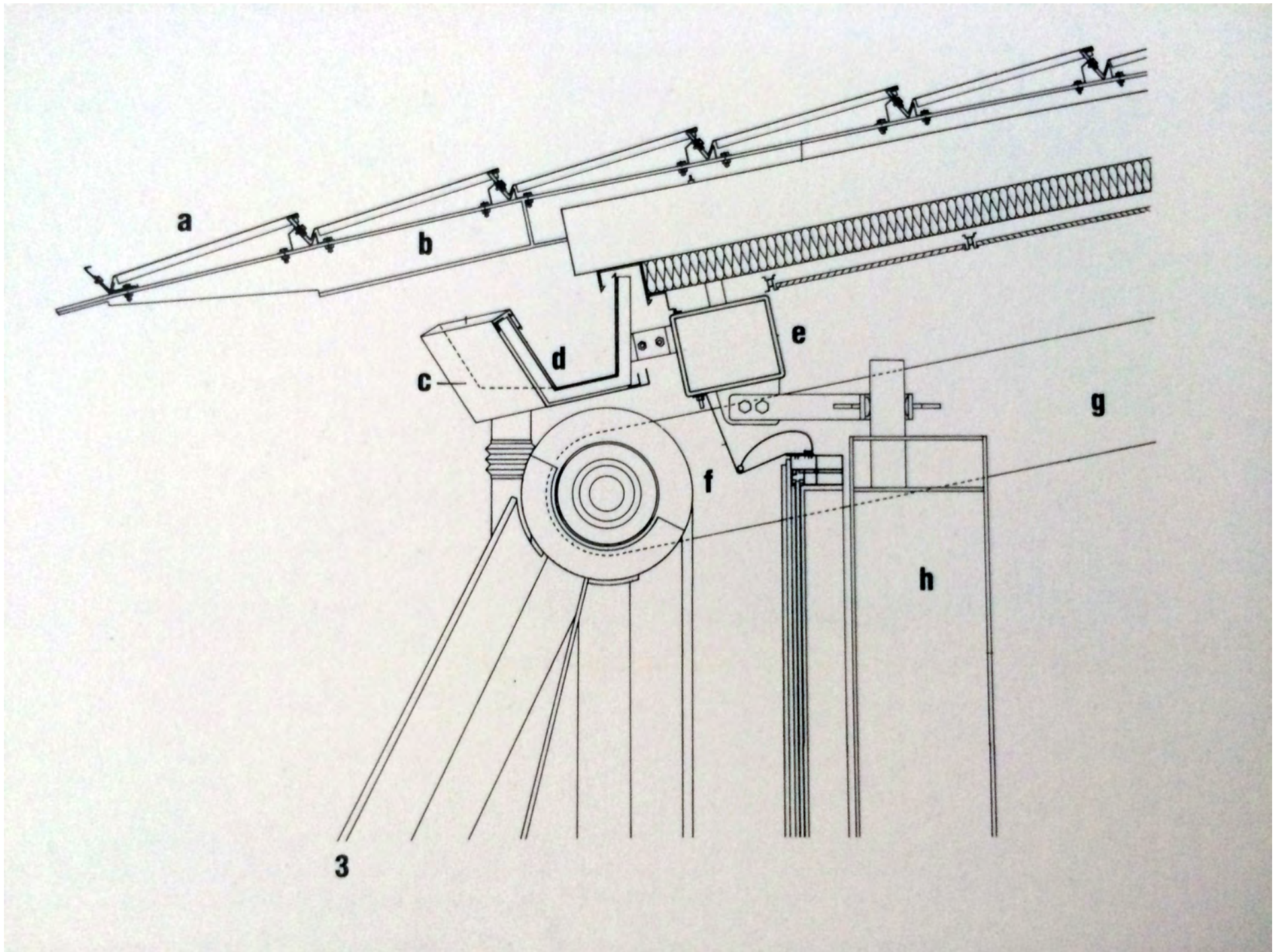
Not much different  
than Janney



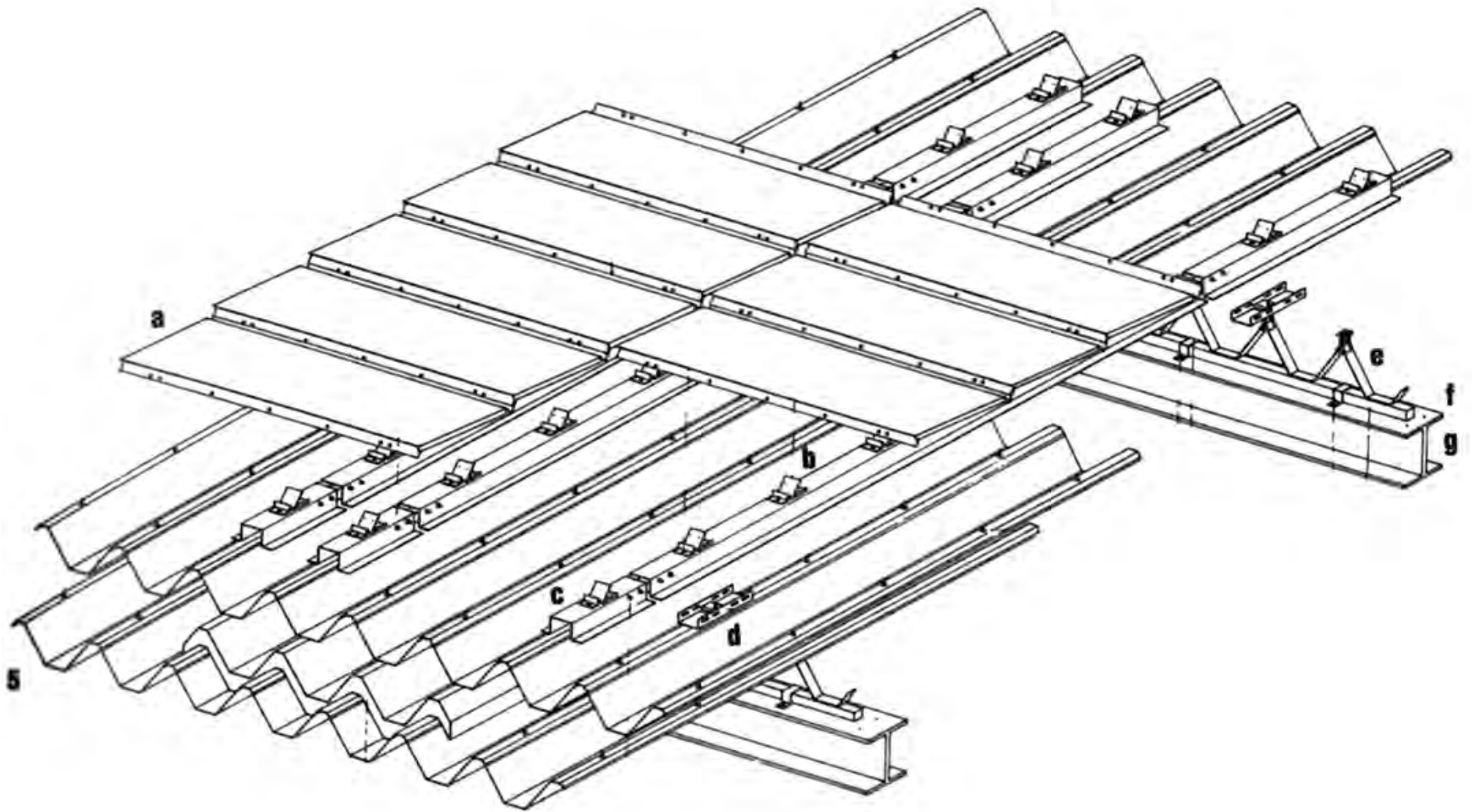


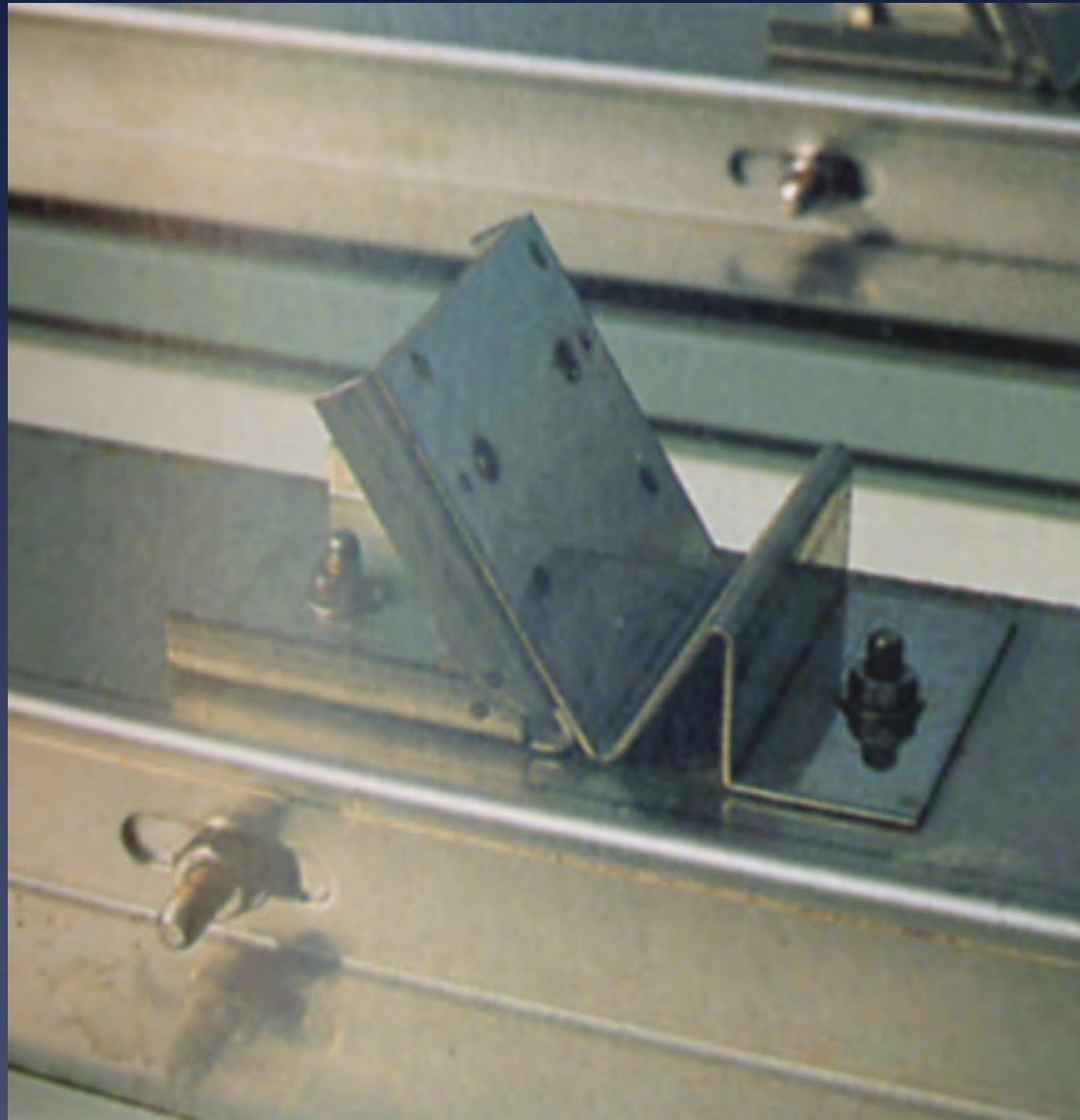






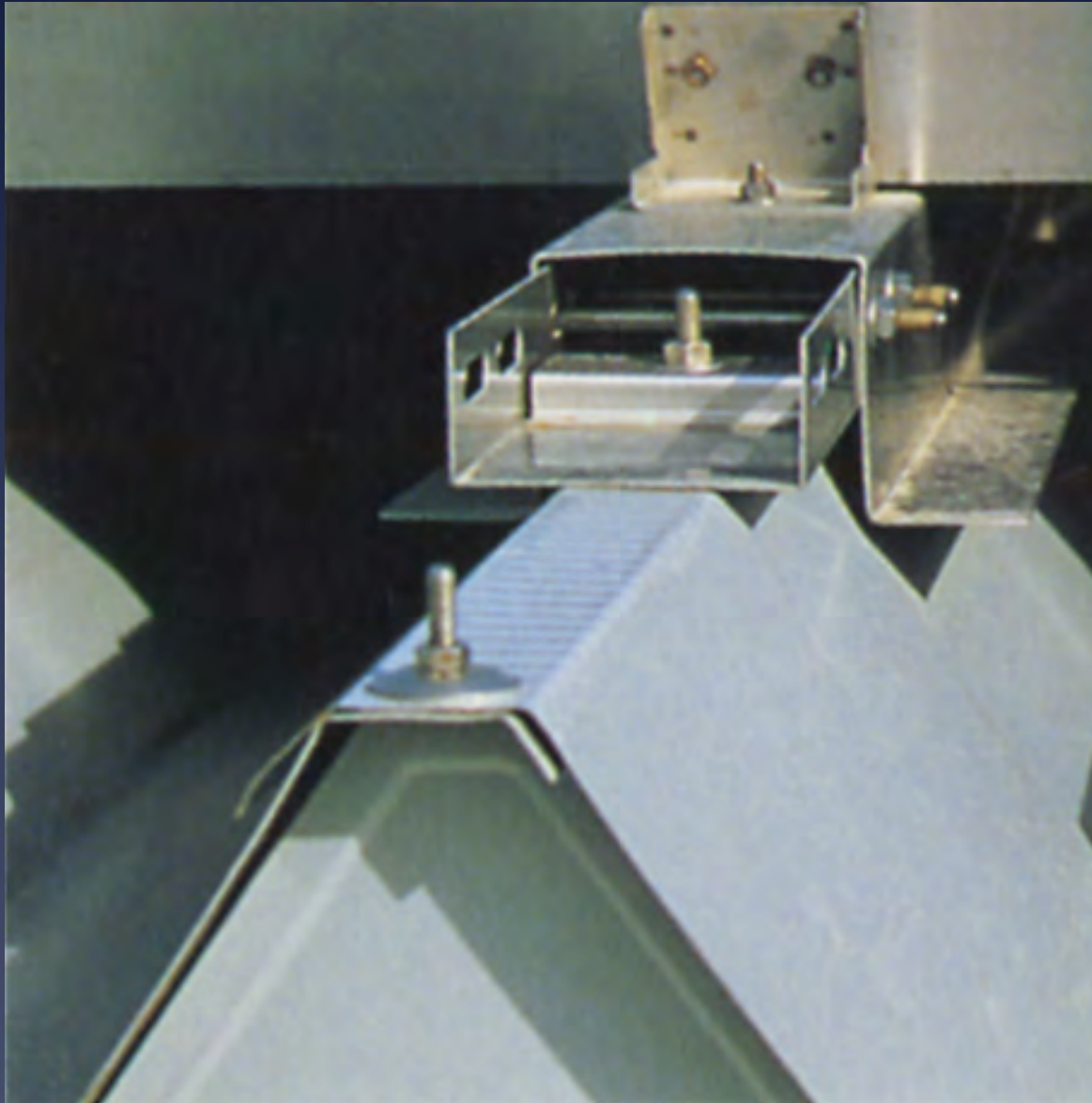




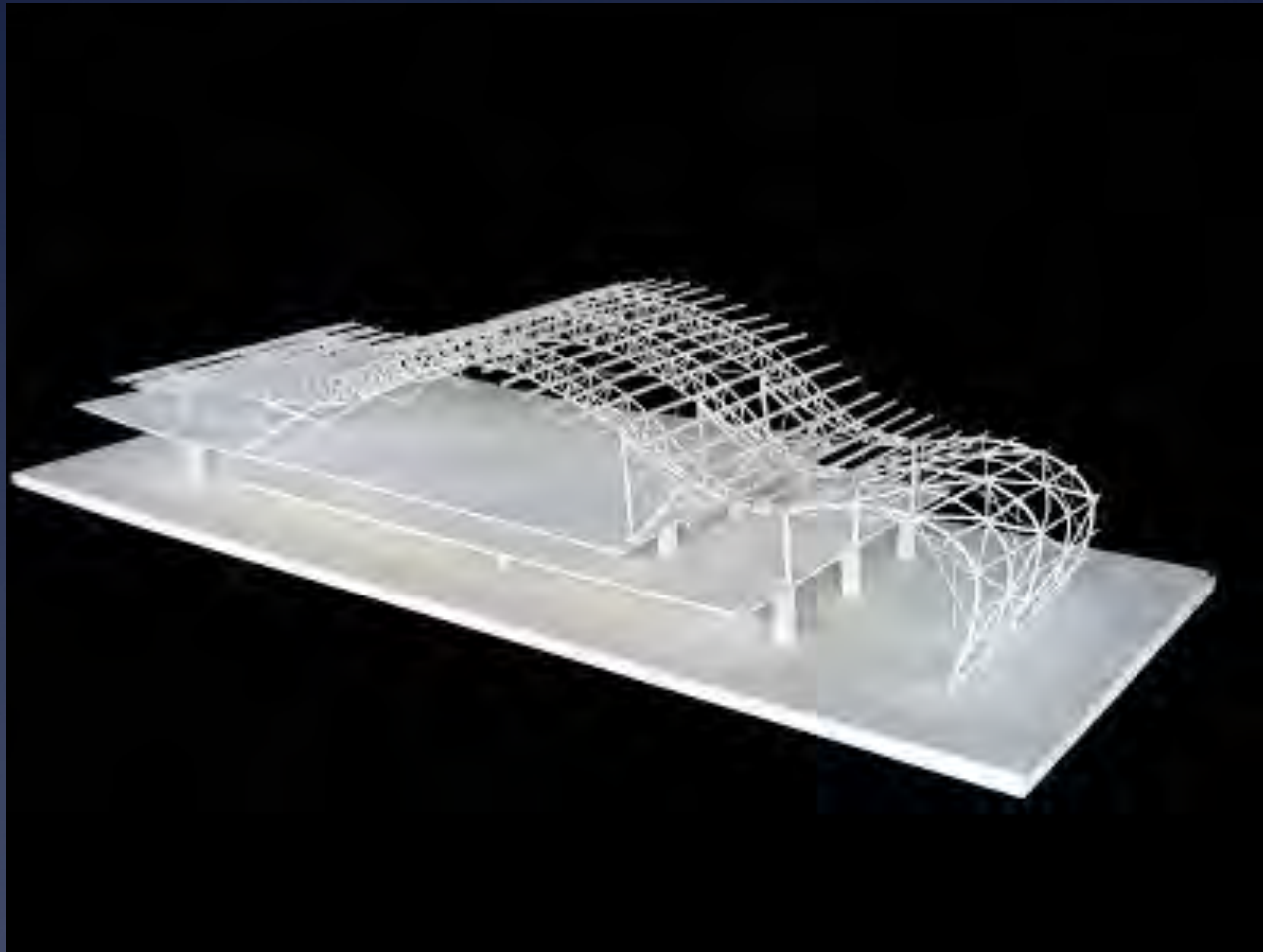










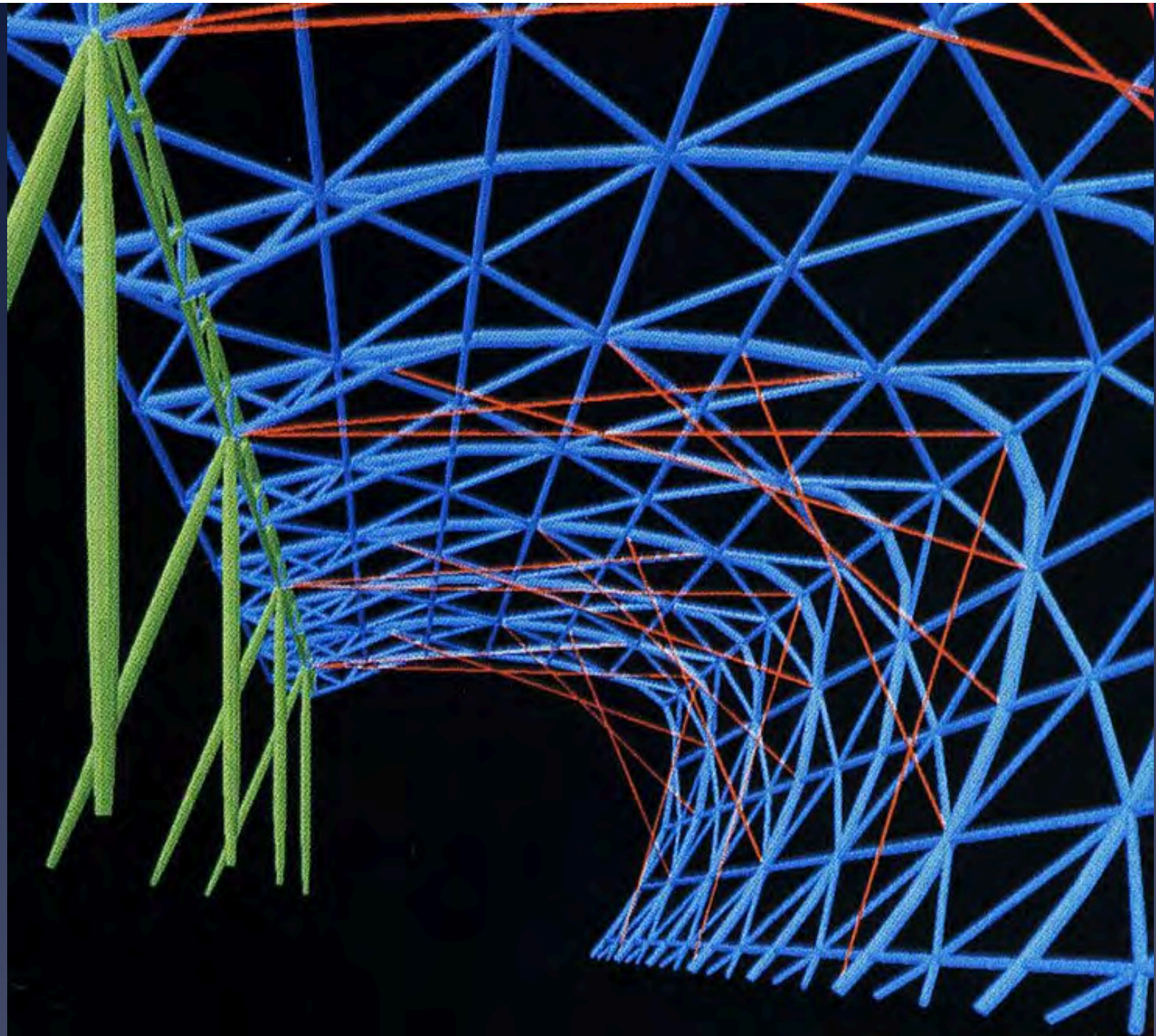




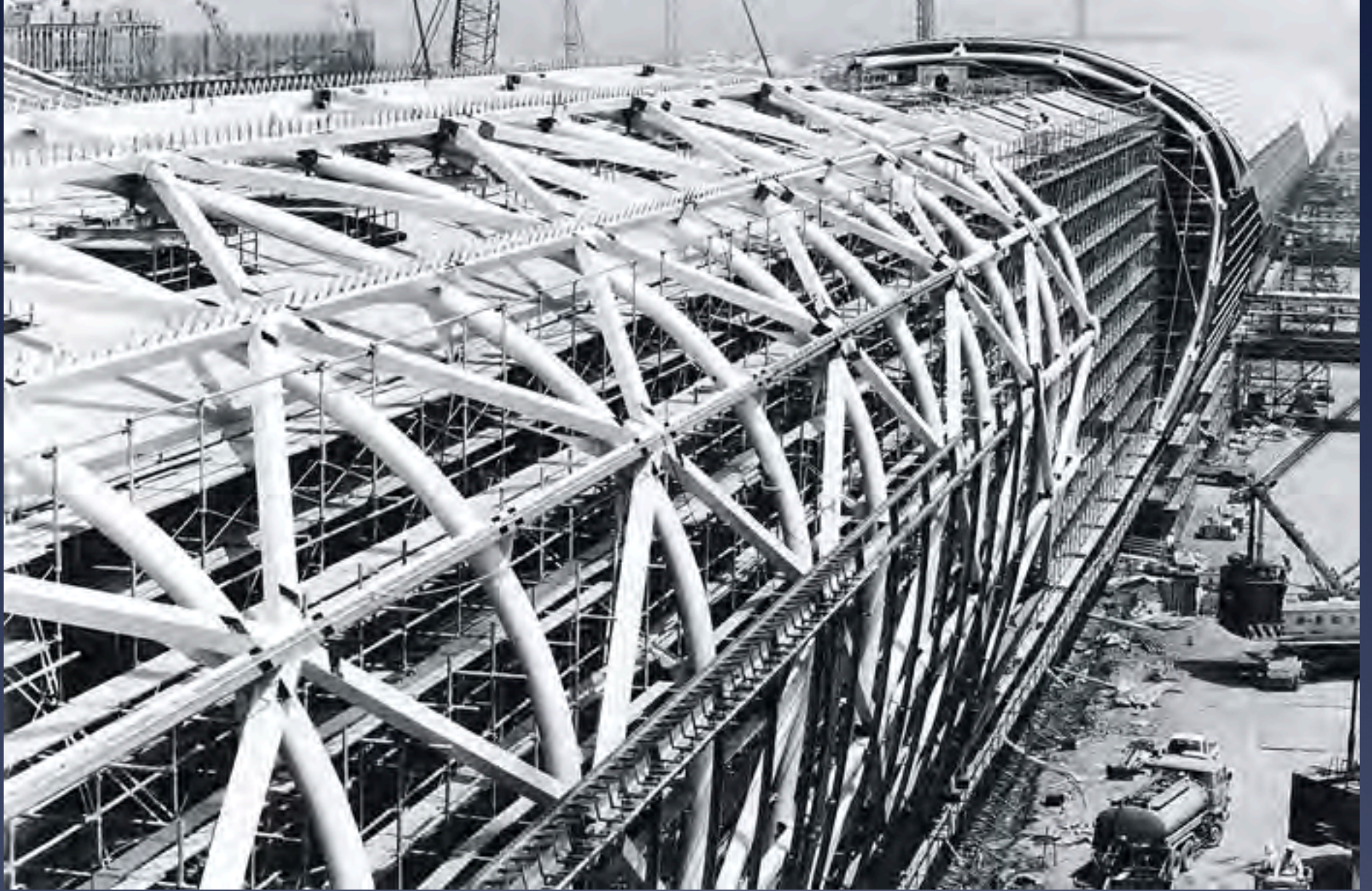








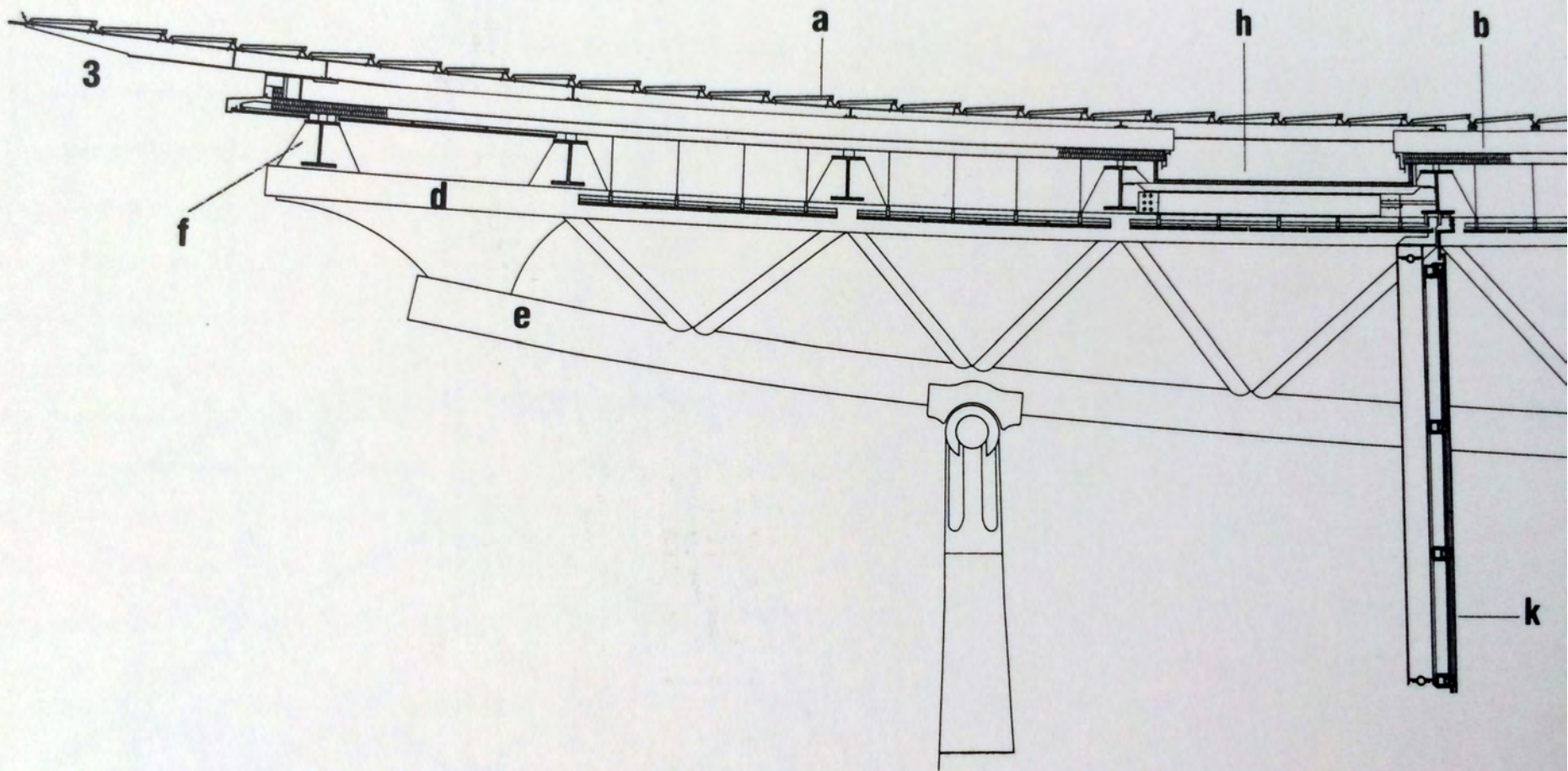




















At the Kansai Airport Renzo Piano uses Glass Fiber Reinforced Cement to clad the steel and insulate it from

fire



- Fabric air direction chutes
- Exposed steel trusses
- Steel columns clad with gfrc fire protection



