

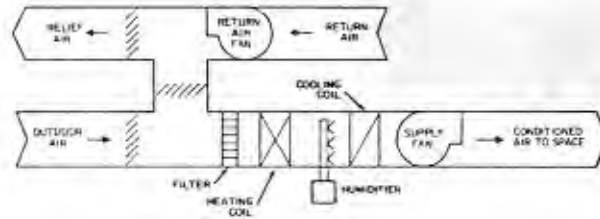
hvac

... SOME SYSTEMS ...

1

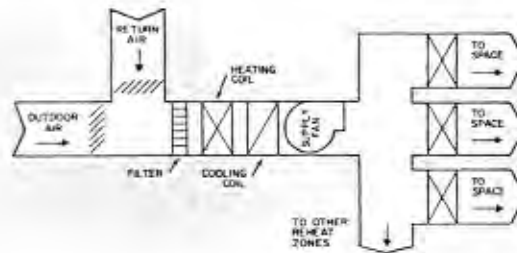
Single Zone System

Single zone systems consist of a mixing, conditioning and fan section. The conditioning section may have heating, cooling, humidifying or a combination of capabilities. Single zone systems can be factory assembled roof top units or built up from individual components and may or may not have distributing duct work.



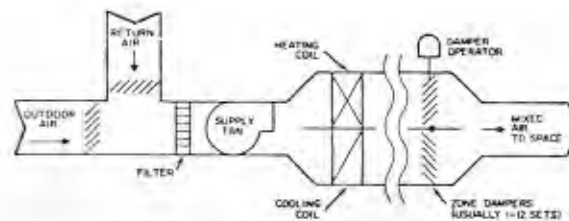
Terminal Reheat System

Reheat systems are modifications of single zone systems. Fixed cold temperature air is supplied by the central conditioning system and reheated in the terminal units when the space cooling load is less than maximum. The reheat is controlled by thermostats located in each condition space.



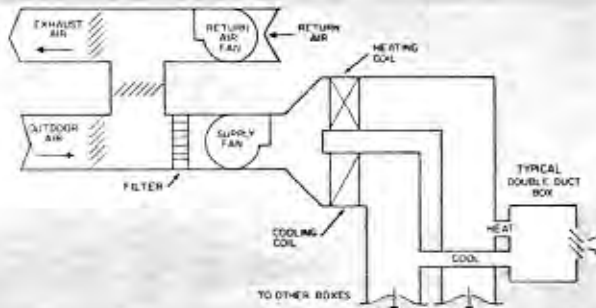
Multizone Systems

Multizone systems condition all air at the central system and mix heated and cooled air at the unit to satisfy various zone loads as sensed by zone thermostats. These systems may be packaged roof top units or field fabricated systems.



Dual Duct Systems

Dual duct systems are similar to multizone systems except heated and cooled air is ducted to the conditioned spaces and mixed as required in terminal mixing boxes.



Variable Air Volume Systems

A variable air volume system delivers a varying amount of air as required by the conditioned spaces. The volume control may be by fan inlet (vortex) damper, discharge damper or fan speed control. Terminal sections may be single duct variable volume units with or without reheat, controlled by space thermostats.

